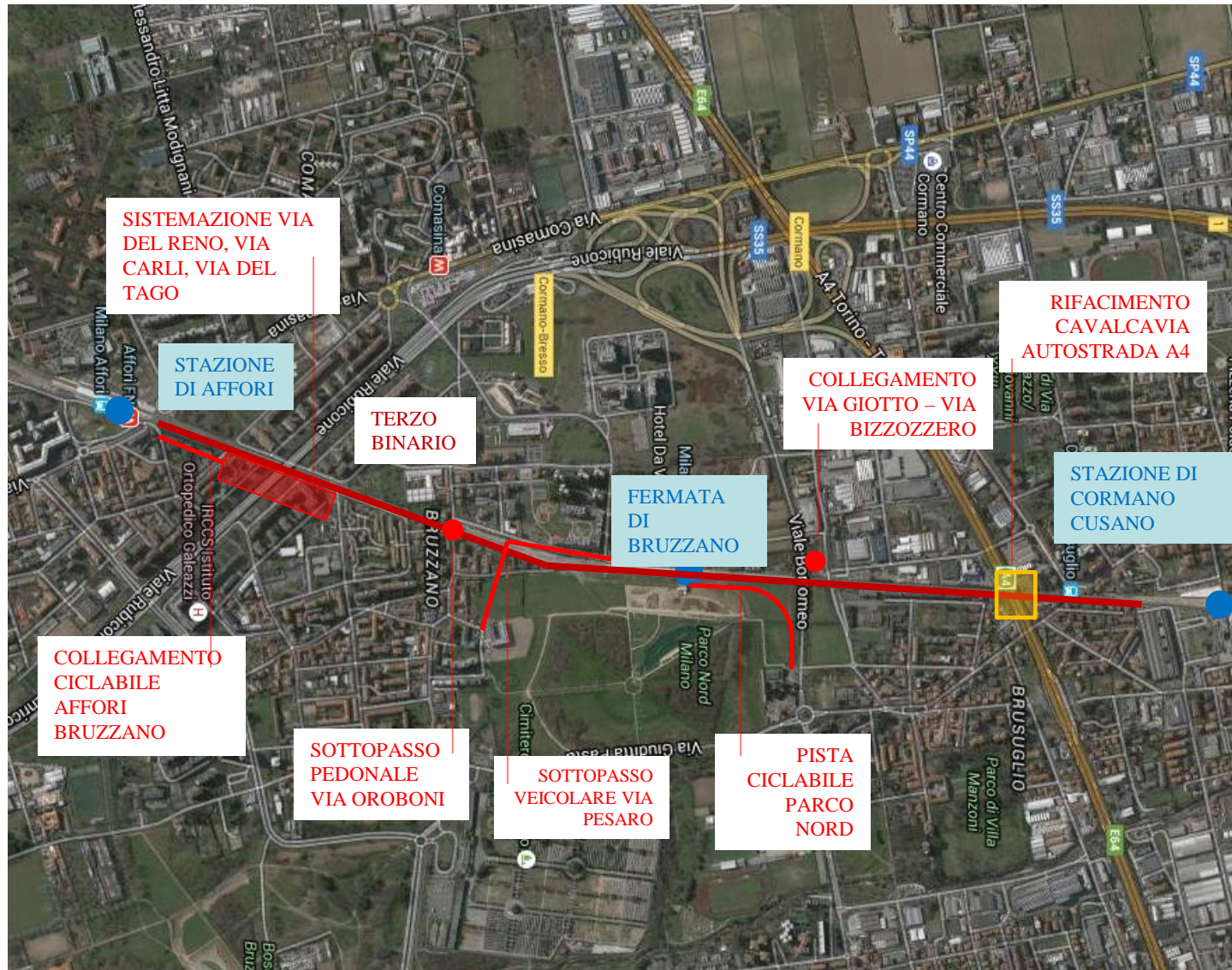
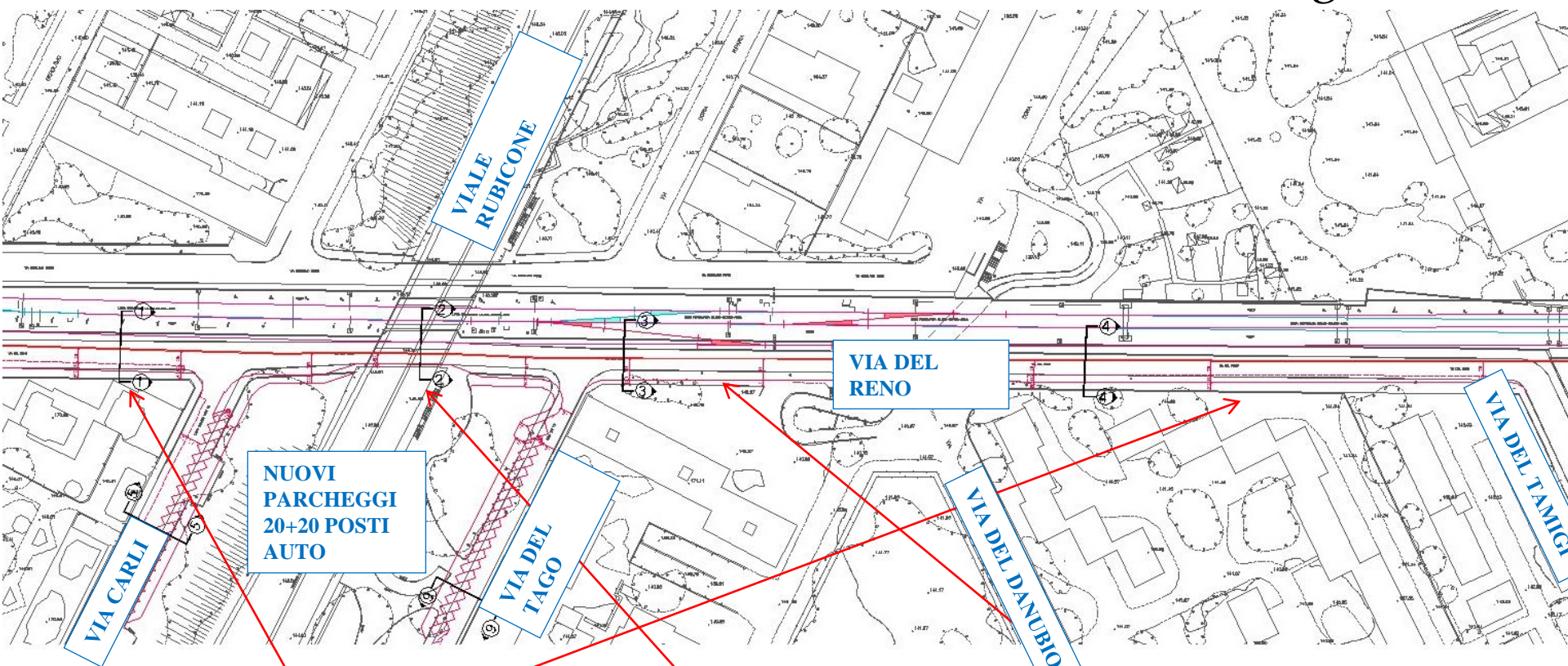


# Interventi previsti

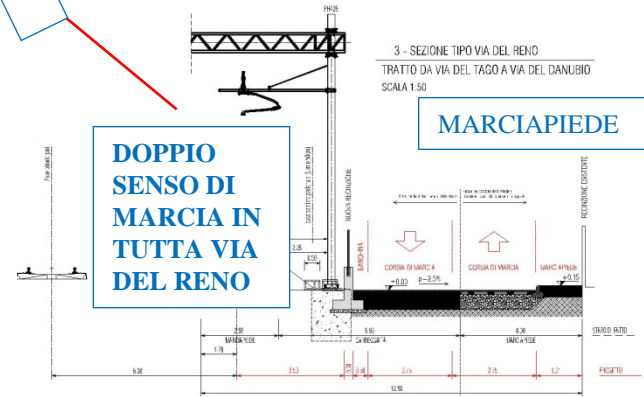
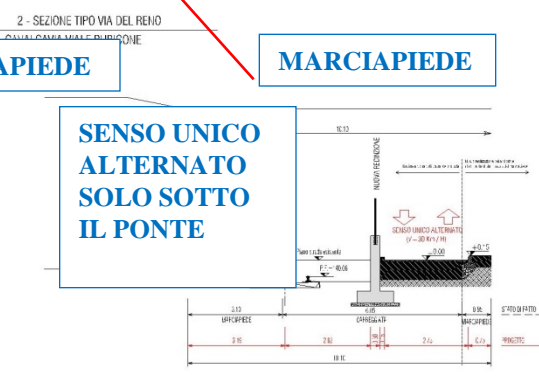
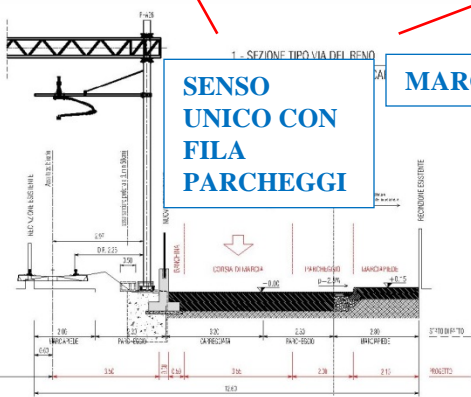




# Sistemazione via del Reno, via Carli e via del Tago

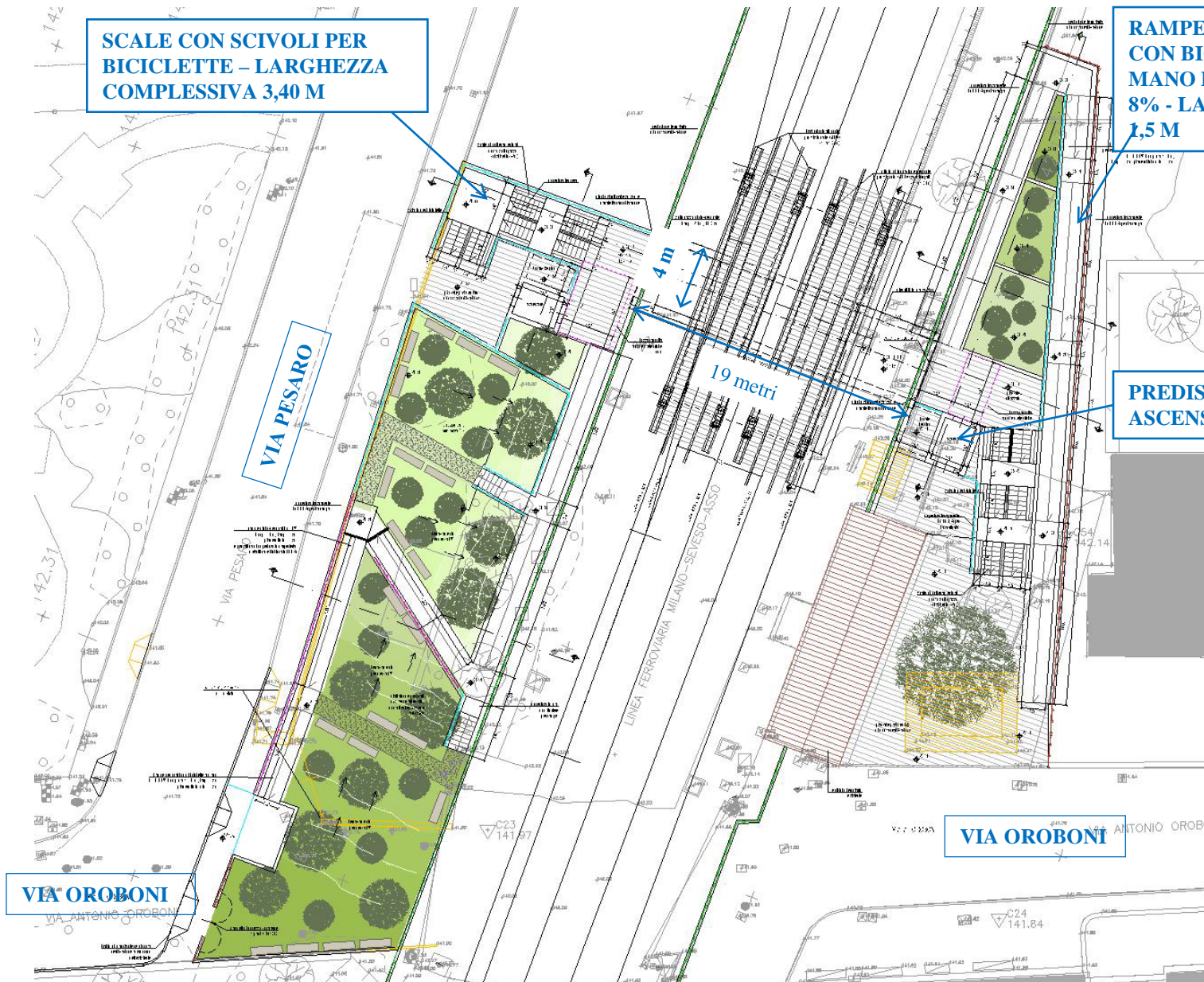


**NUOVI PARCHEGGI  
20+20 POSTI  
AUTO**





# Sottopasso pedonale di via Oroboni



SCALE CON SCIVOLI PER BICICLETTE - LARGHEZZA COMPLESSIVA 3,40 M

RAMPE PEDONALI CON BICICLETTE A MANO PENDENZA 8% - LARGHEZZA 1,5 M

PREDISPOSIZIONE ASCENSORI

VIA PESARO

VIA OROBONI  
VIA ANTONIO OROBONI

VIA OROBONI  
ANTONIO OROB

# Sottopasso veicolare di via Pesaro

